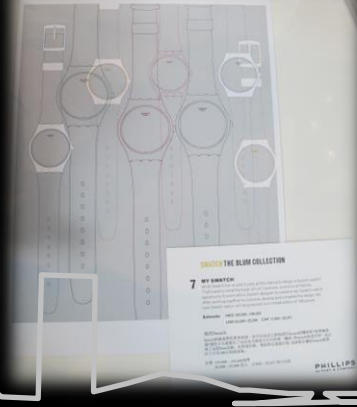


*Fall
2011
the journey
begins*

中华人民共和国签证 CHINESE VISA			
签证种类 CATEGORY	L	次数 ENTRIES	01(壹)
请于此前入境 ENTER BEFORE	20JAN2012	入境后可停留 DURATION OF EACH STAY	030 天 DAYS AFTER ENTRY
签发日期 ISSUE DATE	20OCT2011	签发地点 ISSUED AT	柏林
姓名 FULL NAME			
出生日期 BIRTH DATE			
护照号码 PASSPORT NO.			
备注 REMARKS			



LOT 7

HKD	220,000
CHF	25,740
USD	28,160
CNY	180,180
EUR	21,032
GBP	18,106
JPY	2,177,780

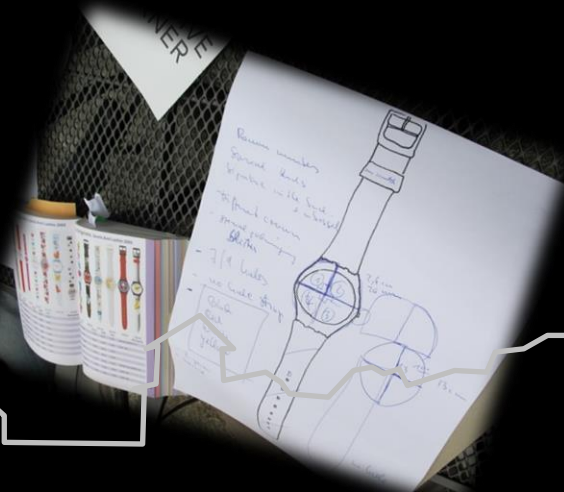


Hong Kong

November 24, 2011

Brugg

April 21, 2012



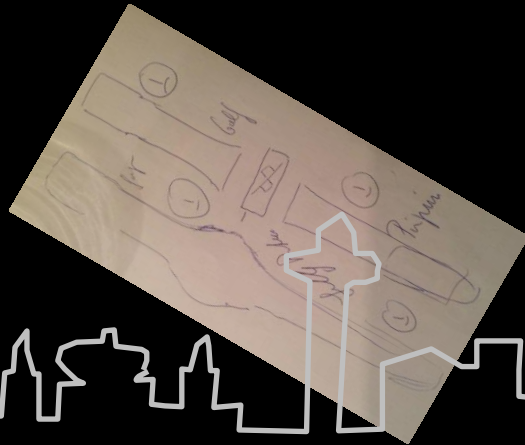


Geneva

May 31, 2012

Madrid

November 22, 2012





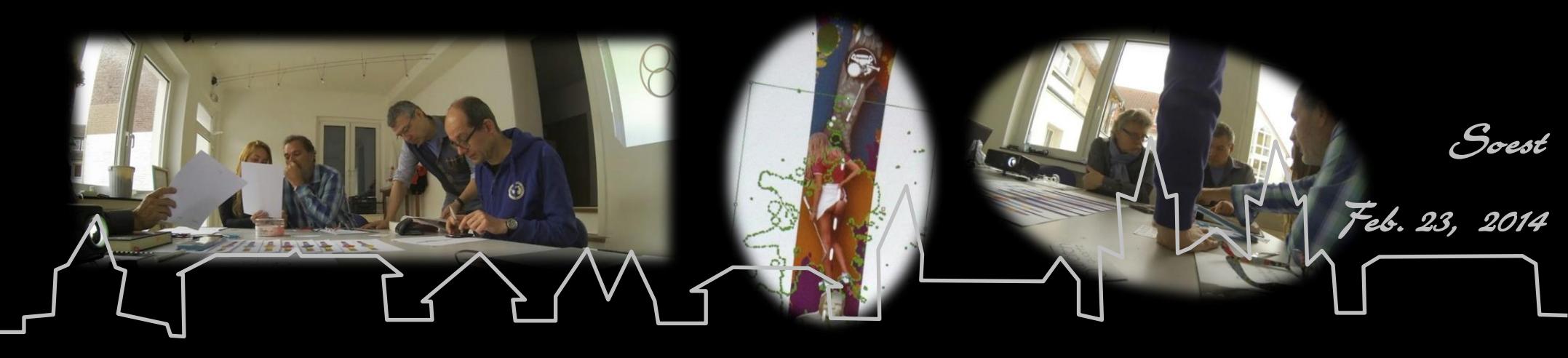
*Biel
Bettlach
Sion*

April 11, 2013

Basel

April 29, 2013





Soest

Feb. 23, 2014

Zurich

April 23, 2014





Heidelberg
July 25, 2014

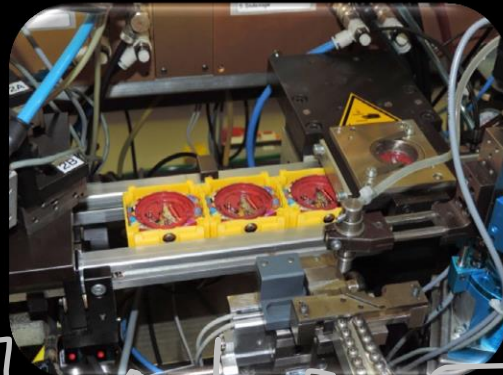
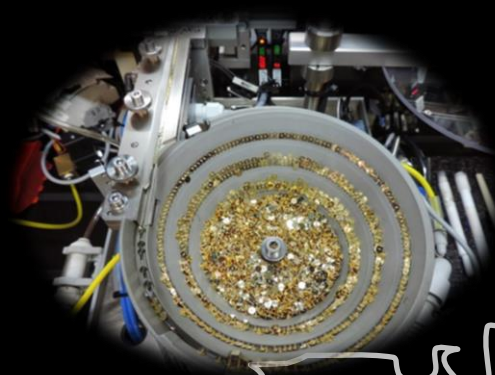
Zurich

November 12, 2014





Sion
March 18, 2015





Sion
March 18, 2015



www.10t7.de